

# 2020 Omaha Area Fishing Forecast



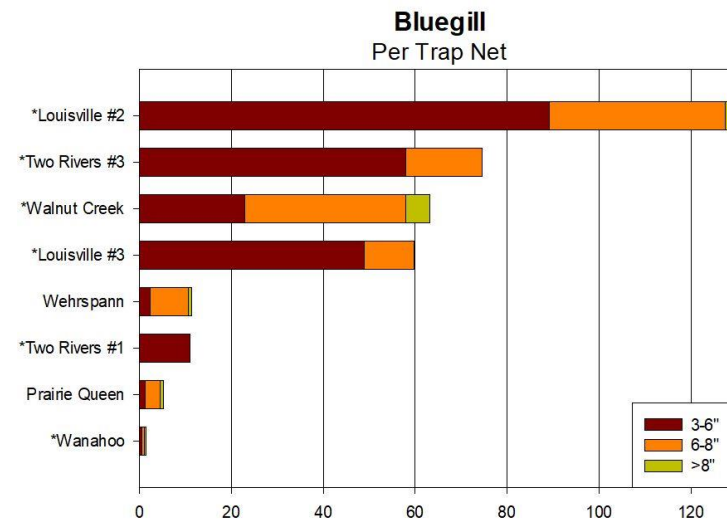
This is a fishing forecast for the Omaha area. The forecast includes figures for area public water bodies that were surveyed by the Nebraska Game and Parks Commission (NGPC) during \*2018 and 2019. Therefore, there may be other water bodies in the area that provide good fishing opportunities that are not included in this forecast (see map). The following information will help anglers decide on where the best fishing for a variety of species can be found based on survey results. Anglers seeking more information on area lakes such as locations, lake maps, regulations and stocking reports are encouraged to browse the Nebraska Game and Parks website at [www.outdoornebraska.gov](http://www.outdoornebraska.gov).



Photo 1. Walleye (*Sander vitreus*)

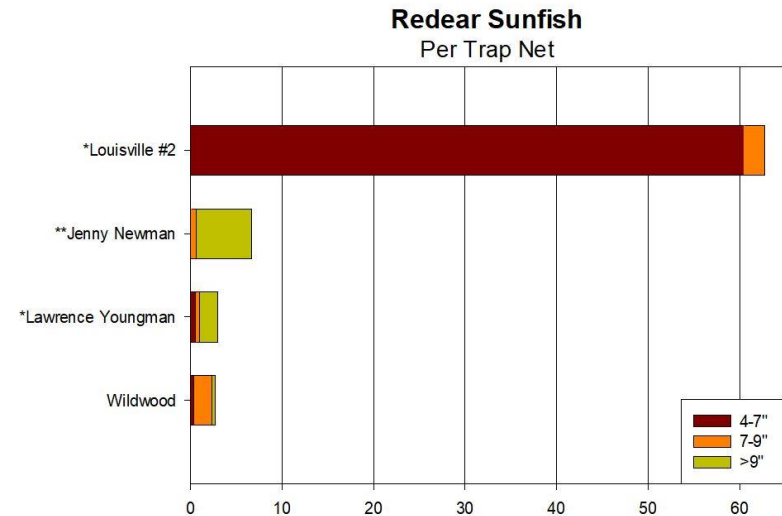
## Bluegill

Anglers targeting bluegill in the Omaha area will continue to have a multitude of quality fisheries to choose from in 2020. Surveys of **Louisville #2** in 2018 documented a large proportion of 3-6 inch fish that with continued growth, will bolster the quality fishery in 2020. **Louisville #2, Walnut Creek, Wehrspann, and Prairie Queen** all have bluegill greater than 8 inches for anglers targeting larger fish.



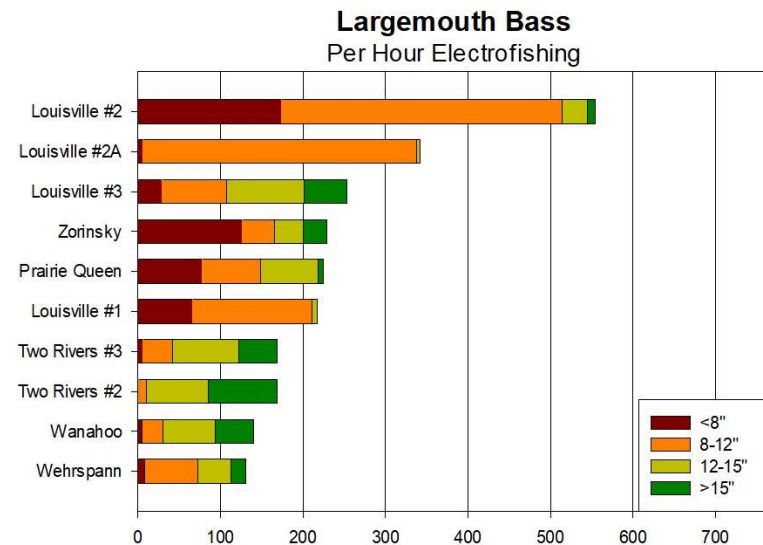
## Redear Sunfish

Redear sunfish continue to thrive in a few southeast Nebraska fisheries and 2020 will offer anglers a chance at some master anglers in multiple lakes. The redear sunfish at **Lawrence Youngman** and **Jenny Newman** have really taken off in the last couple of years and will provide the best chance at a master angler. Higher abundances but slightly smaller fish sizes can be found at **Louisville #2**. Take note that **Jenny Newman**, in Platte River State Park, is a catch and release fishery open to all anglers.



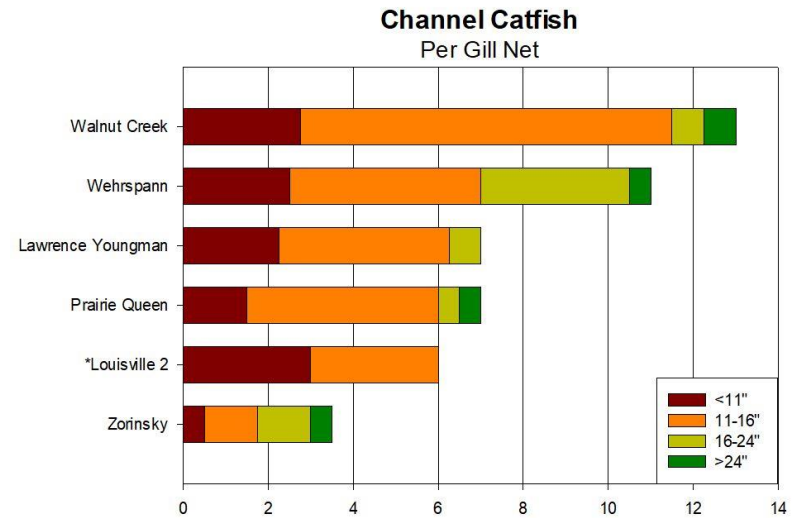
## Largemouth Bass

Largemouth bass continue to do well in many Omaha area lakes. Similar to bluegill, largemouth bass flourish in lakes with dense vegetation and good water quality which can be found in many of the area lakes. **Louisville #2** and **#2A** exhibited the highest catch rates in 2019 which should provide anglers with fast fishing. Anglers seeking larger fish should head to **Louisville #3**, **Zorinsky**, **Two Rivers #3** and **Two Rivers #2**.



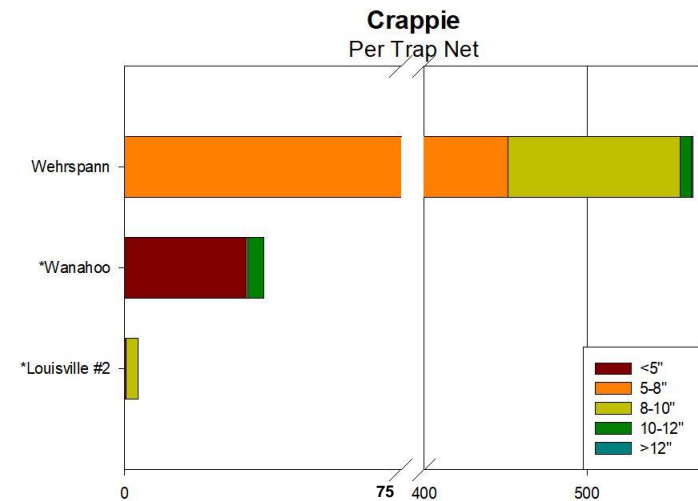
## Channel Catfish

Channel catfish are found in virtually every fishery in the Omaha area, and anglers focused on catching numbers or larger catfish (greater than 24 inches) should have good luck in **Walnut Creek**. **Wehrspann, Lawrence Youngman, and Prairie Queen** all have good numbers of 11-16 inch fish as well for anglers looking to harvest fish.



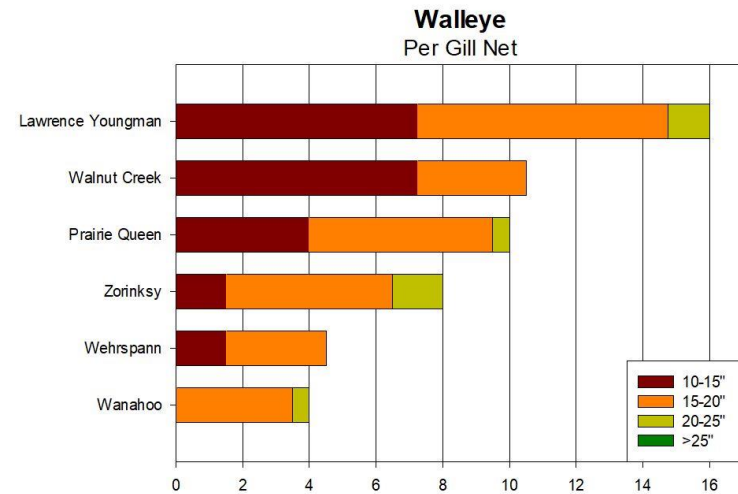
## Crappie

Anglers targeting crappie in the Omaha area should have good luck finding fish at either **Wehrspann** or **Wanahoo**. Both **Wehrspann** and **Wanahoo** also have fish in the 10-12 inch range for anglers pursuing larger crappie.



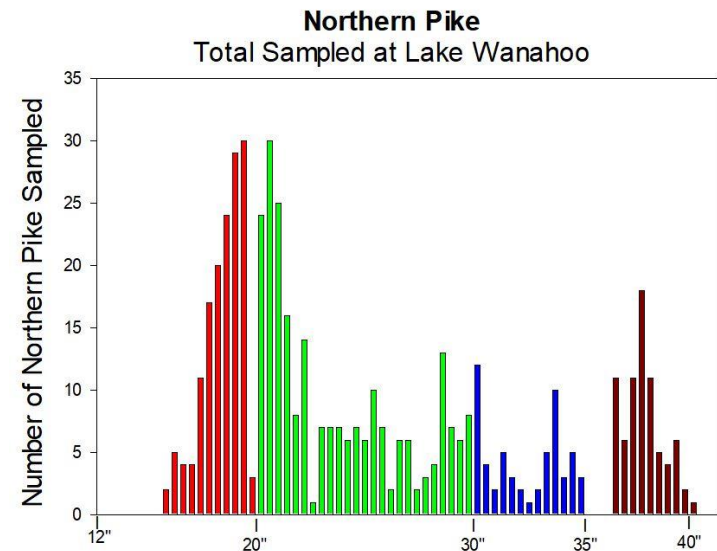
## Walleye

We are now going on the fifth year of our advanced walleye stocking program and multiple reservoirs in the metro have benefitted immensely. **Lawrence Youngman, Walnut Creek, Prairie Queen, Zorinsky, Wehrspann, and Wanahoo** will all provide anglers chances at some legal 15" walleyes in 2020. **Lawrence Youngman, Prairie Queen, Zorinsky, and Wanahoo** also have walleye over 20 inches for anglers seeking larger walleye.



## Northern Pike

**Lake Wanahoo** will again provide a unique fishing opportunity to catch northern pike in eastern Nebraska. A multitude of fish in the 35-40" range were caught and tagged in the spring of 2019. The northern pike tagging study will continue in 2020 and anglers are asked to report all tagged fish to [NGPC.FISHTAGS@NEBRASKA.GOV](mailto:NGPC.FISHTAGS@NEBRASKA.GOV). Anglers are required to release all northern pike caught at **Lake Wanahoo**.



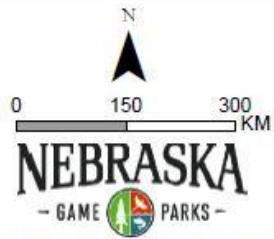
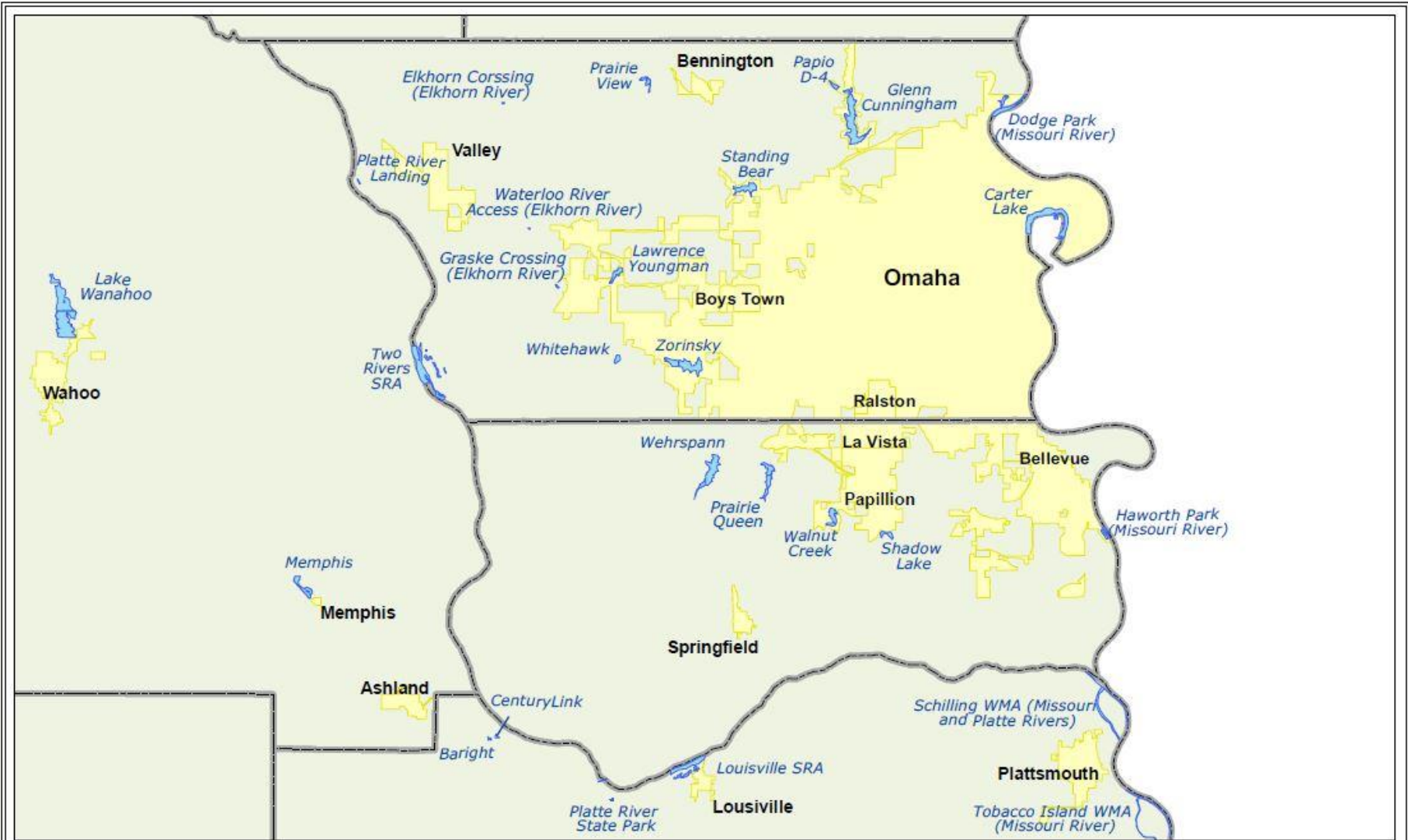
## Other Species

### Rainbow Trout

Although the Omaha metro doesn't have cold-water streams that support trout, there is still plenty of opportunity in and around Omaha to catch them. Rainbow trout are routinely stocked in the spring at **Two Rivers 5** while **Standing Bear, Benson Lake, Hitchcock Lake, Towl Lake** receive fall stockings and **Lake Halleck** and **CenturyLink Lake (in Mahoney SP)** receive spring and fall stockings. Anglers can check the stocking database on the Game and Parks website to see the exact date rainbow trout were stocked.



Photo 2. Black Crappie (*Pomoxis nigromaculatus*)



Trisha Schlake, IT Division, 1/6/2016

