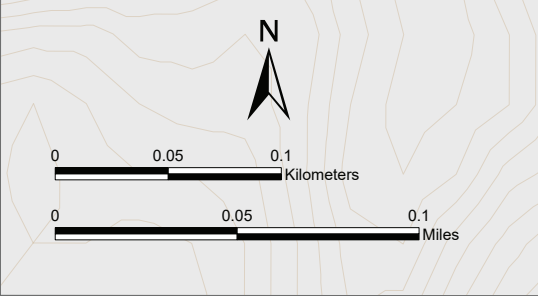
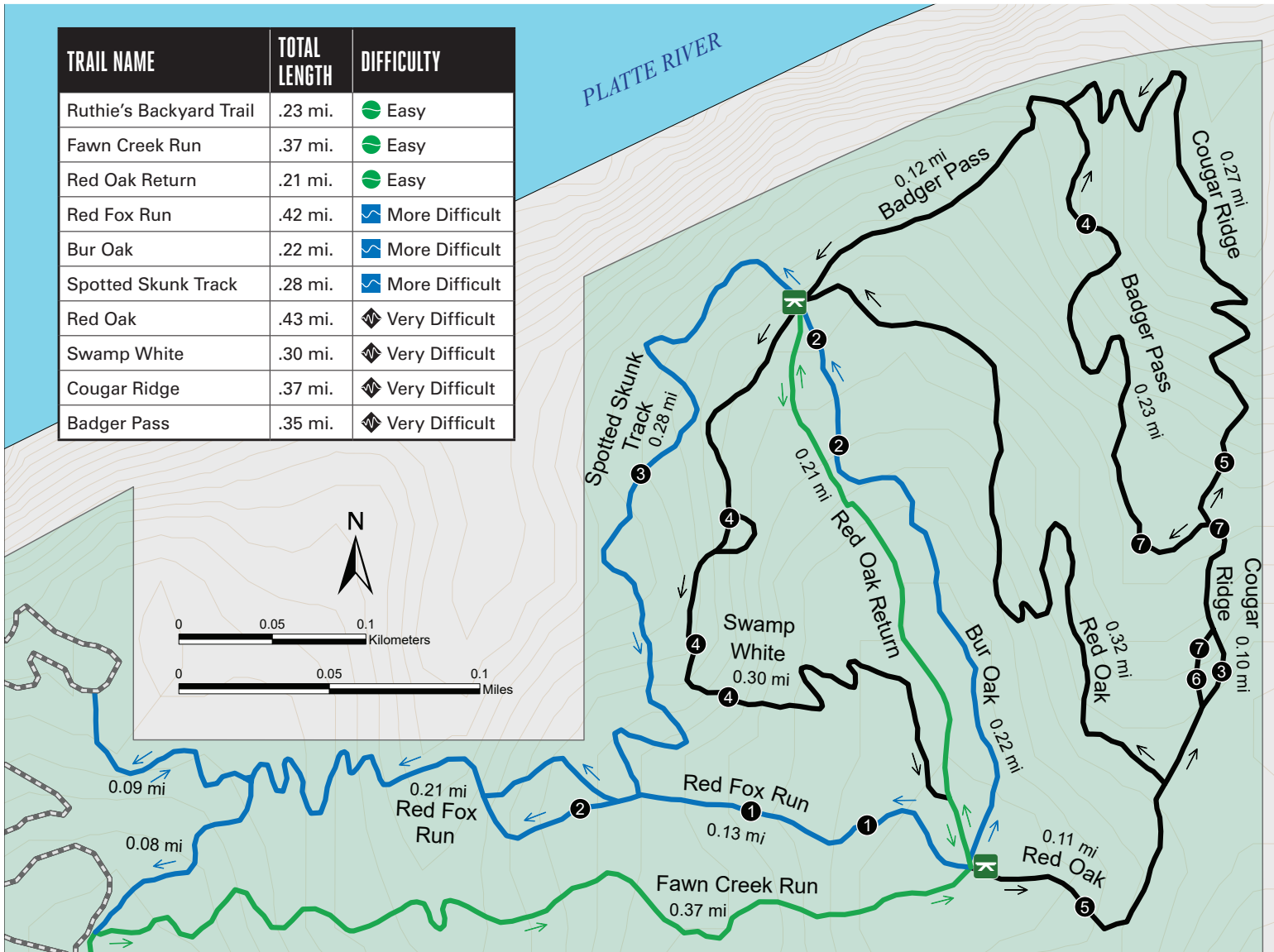
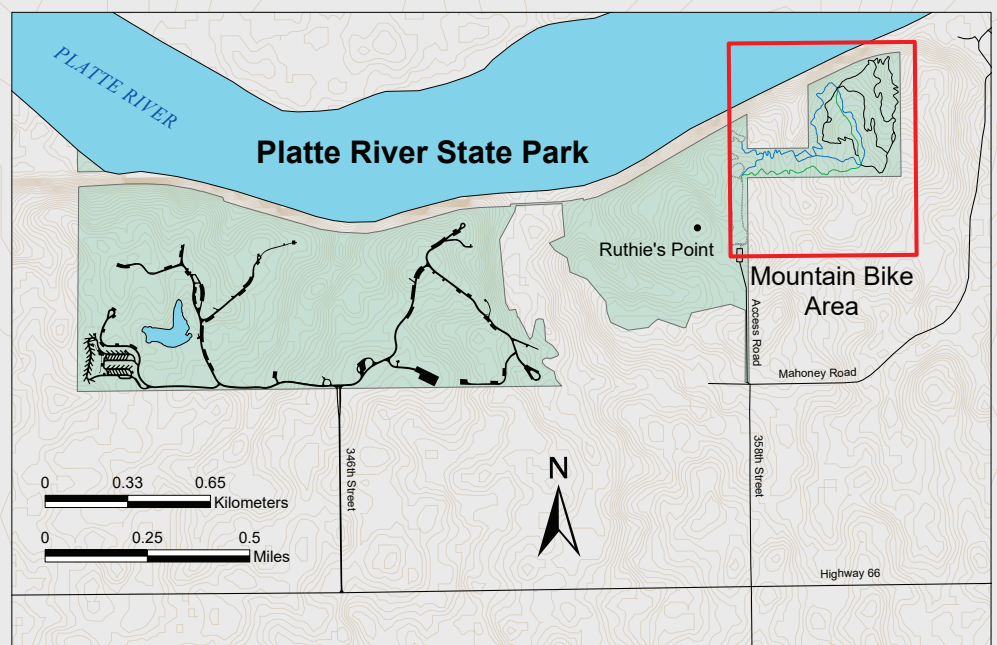


PLATTE RIVER MOUNTAIN BIKE TRAILS

TRAIL NAME	TOTAL LENGTH	DIFFICULTY
Ruthie's Backyard Trail	.23 mi.	● Easy
Fawn Creek Run	.37 mi.	● Easy
Red Oak Return	.21 mi.	● Easy
Red Fox Run	.42 mi.	🌊 More Difficult
Bur Oak	.22 mi.	🌊 More Difficult
Spotted Skunk Track	.28 mi.	🌊 More Difficult
Red Oak	.43 mi.	⚔️ Very Difficult
Swamp White	.30 mi.	⚔️ Very Difficult
Cougar Ridge	.37 mi.	⚔️ Very Difficult
Badger Pass	.35 mi.	⚔️ Very Difficult



- Park Amenities**
- 🔧 Bike Repair Station
 - 🪑 Bench
 - P Parking
 - 🏍️ Pump Track
 - 🚻 Restroom
 - 🚶 Multi-Use Trails
- Difficulty Rating**
- Easy
 - More Difficult
 - Very Difficult
- Mountain Bike Features**
- ① Drop Off
 - ② Stair Steps
 - ③ Table Tops
 - ④ Log Ride
 - ⑤ Flat Ramp
 - ⑥ Launch Pad
 - ⑦ Wall Ride



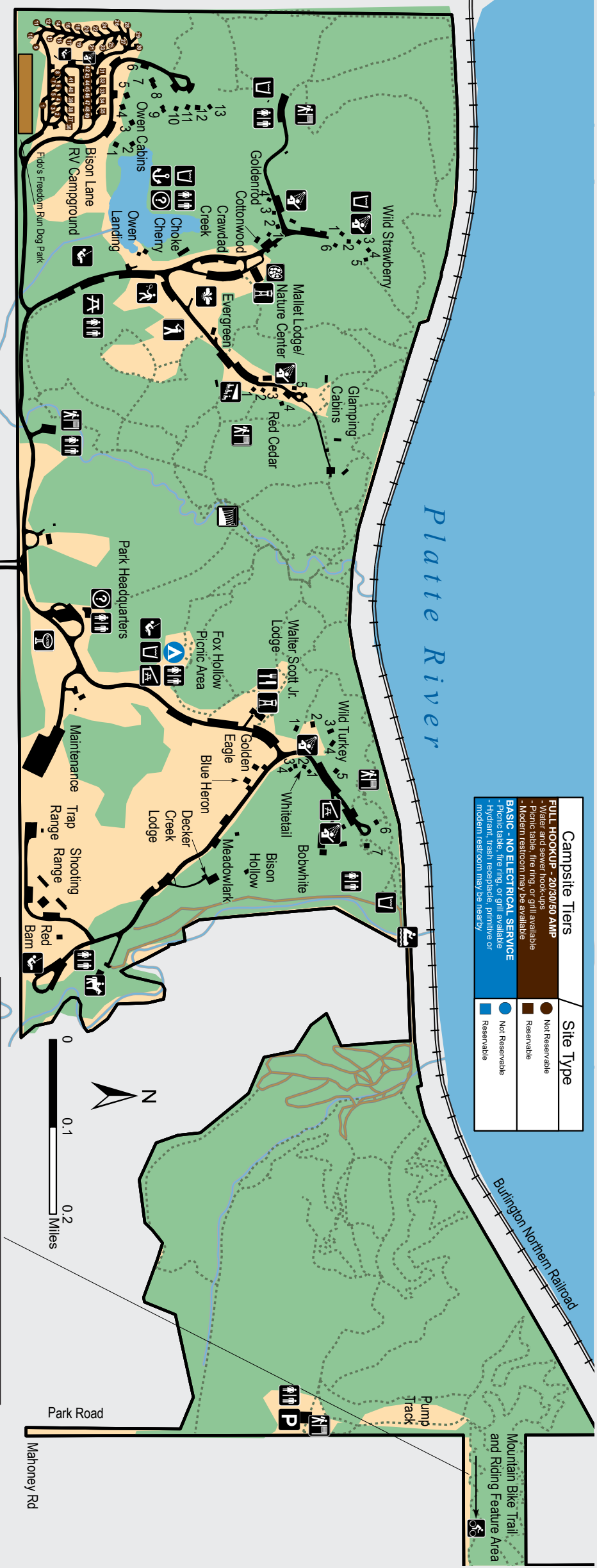
TRAIL ETIQUETTE

- Follow trail directions.
- Stay on designated trails.
- Pack it in; pack it out.
- Control your bicycle.
- Respect other users.
- These are your state park trails; together we can keep them in the best possible shape.

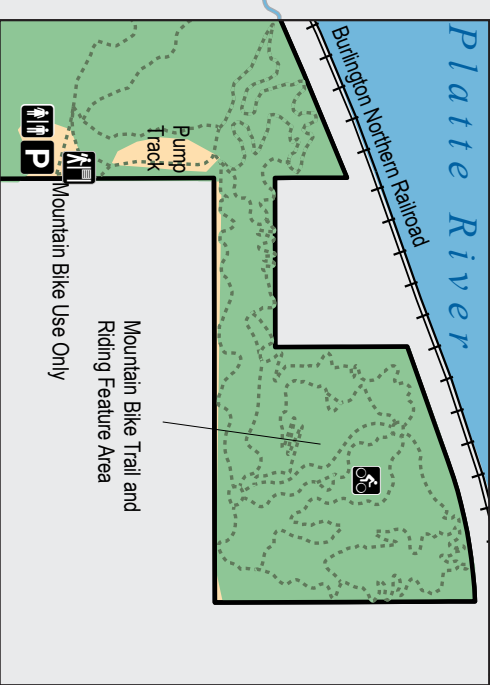
④ Log Ride



Campsite Tiers	Site Type
FULL HOOKUP - 20/30/50 AMP - Water and sewer hookups - Picnic table, fire ring, or grill available - Modern restroom may be available	Not Reservable
BASIC - NO ELECTRICAL SERVICE - Picnic table, fire ring, or grill available - Hydrant, trash receptacle, primitive or modern restroom may be nearby	Reservable
	Not Reservable
	Reservable

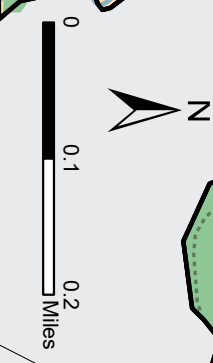


- | | | | |
|-----------------|--------------------|----------------|----------------------------------|
| Arts and Crafts | Information | Picnic Shelter | Trailhead |
| Sports Field | Lookout Tower | Playground | Water Tower |
| Canoe Access | Marina | Restroom | Waterfall |
| Drinking Water | Mountain Bike Area | Shower | Basic Nonreservable Tent Camping |
| Food Service | Parking | Spray Park | Park Trail Rides |
| Horse Riding | Picnic Area | Theater | Park Boundary |



The Nebraska Game and Parks Commission does not discriminate based on race, color, ethnicity, national origin, sex, pregnancy, sexual orientation, gender identity, religion, disability, age, genetic information, veteran status, marital status, and/or political affiliation in its programs, activities, or employment. Any person who believes he or she has been discriminated against in any program, activity, facility, or service should contact the Nebraska Game and Parks Commission, Lincoln, NE 68547-10641, the Nebraska Equal Opportunity Commission, Lincoln, NE 68547-2024, TTY/711/800-692-6112, Director, Office of Diversity, Inclusion and Civil Rights, U.S. Department of Interior, 1849 C Street, NW, Washington, D.C. 2024

To Highway 66
346th Street
To I-80
To Louisville



358th Street
To Highway 66