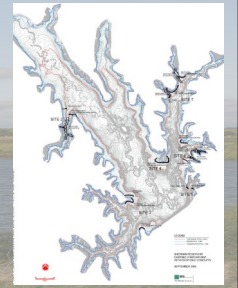


# Sherman Reservoir

## 2018 Angler Survey Summary

Nebraska Game and Parks Commission  
Brad Eifert, Fisheries Biologist



An angler survey was completed at Sherman Reservoir in 2018 from April through October. During the survey, anglers were counted and interviewed on approximately 10 week days and 6 weekend days per month. In total, there were 114 days surveyed and 1034 parties interviewed during the seven month time period. Angler surveys provide estimates of fishing effort, catch and harvest rates, catch per hour, and size structure of the fish caught.

The following text and graphs provide summaries of the 2018 survey with comparison to previous years.

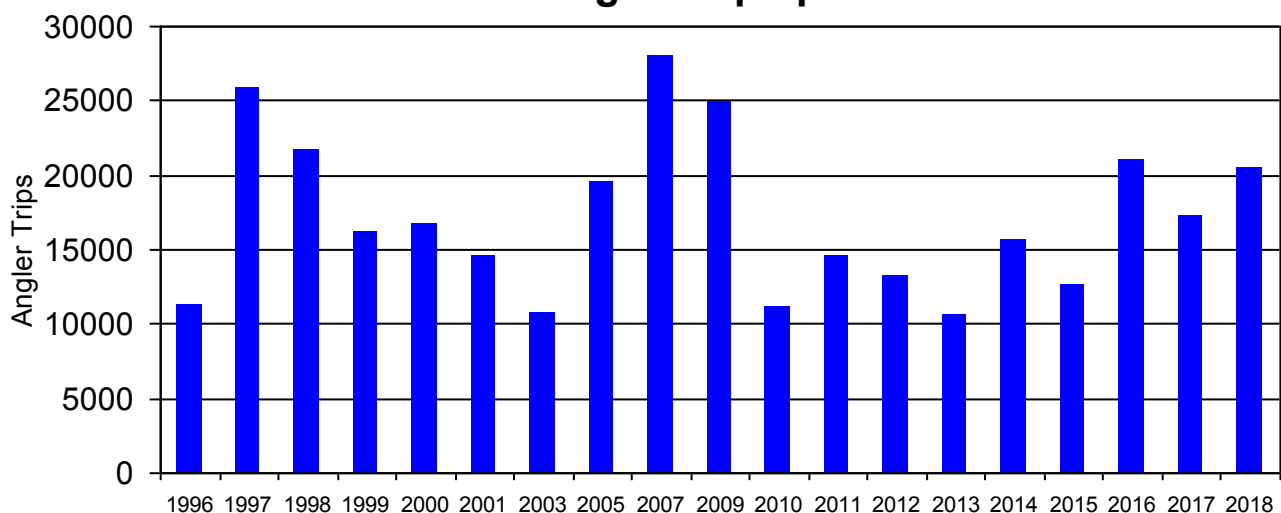
### Fishing Effort Summary

The number of anglers making fishing trips to Sherman Reservoir was slightly higher in 2018, as an estimated 20,505 angler trips were made to Sherman Reservoir during the seven month survey period. Since the angler survey was started in 1996, there has been an average of 17,159 fishing trips annual fishing trips made to Sherman Reservoir during the April to October time frame.

There were 501 bank anglers and 533 boat anglers interviewed during the 2018 angler survey. When the data is extrapolated, bank anglers spent 15,360 hours and boat anglers spent 93,900 hours of angling effort during the survey period. Total time spent fishing at Sherman Reservoir from April through October was 109,260 hours. There were 3,920 bank angling trips and 16,585 boat trips.

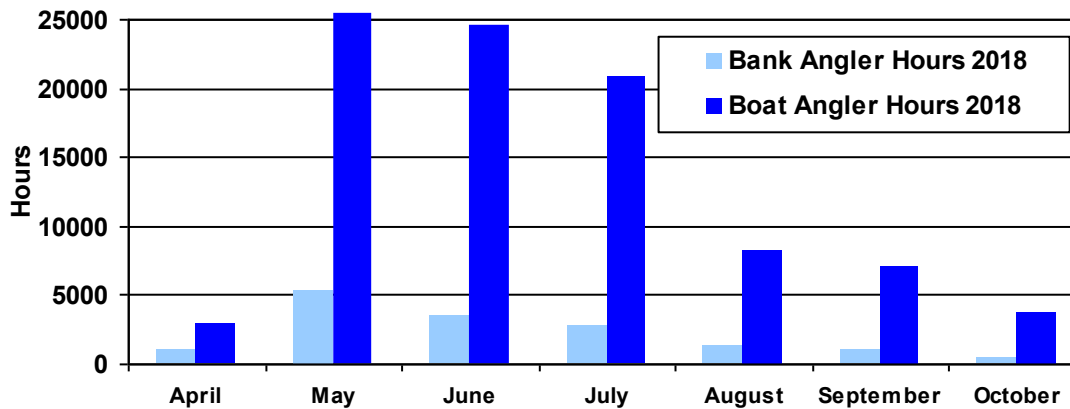
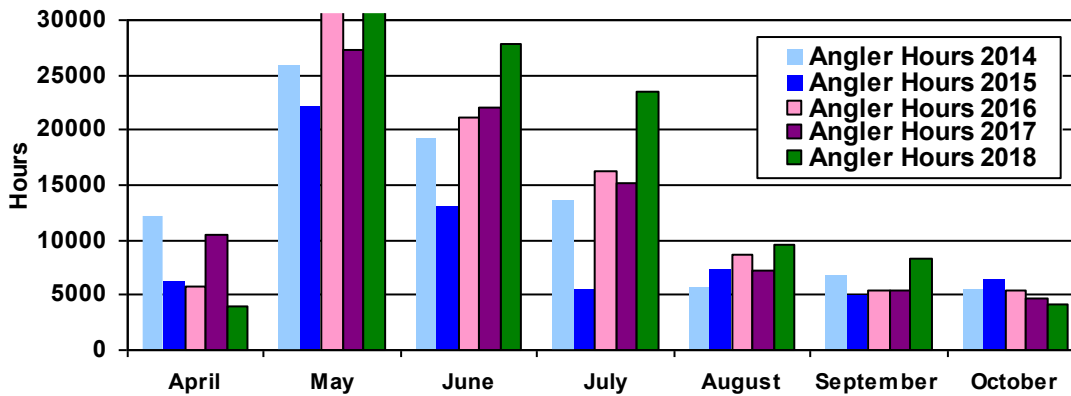
While most anglers who fished Sherman were from Nebraska, anglers from eleven other states were contacted during the survey. Nebraska anglers originated from 123 different communities and 42 counties from across the State. The most common counties represented in the survey included: Hall (32%), Buffalo (16%), Sherman (12%), Howard (5%), Douglas (5%), Lancaster (4%), and Custer (3%).

### Total Angler Trips per Year



## Fishing Effort by Month

Cool and wet weather conditions during April resulted in below average fishing pressure for that month. May, June, and July were the busiest months for angling at Sherman and high reservoir levels during the summer months resulted in slightly higher angling pressure during August and September. Poor weather conditions resulted in lower than average angling pressure during October.



## Supplemental Questions

Two supplemental questions were asked of the anglers during the survey.

### How many days is your current fishing trip?

69% responded with one day, 13%-two days, 11%-three days, and 7%-four days or longer.

### How many unique households are represented by members of your group?

60% responded with 1, 33% responded with 2, 5% responded with 3, 2% greater than 4

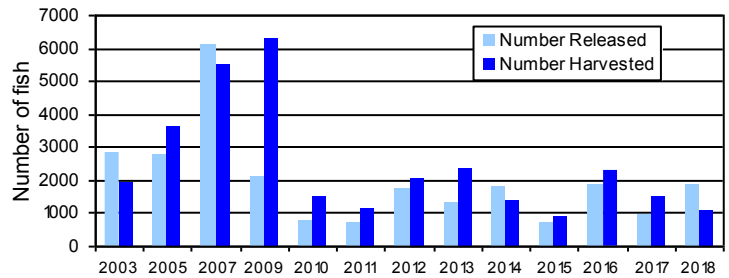
## Channel Catfish

**2018 Regulations:** *No length limit, 5 fish daily bag*

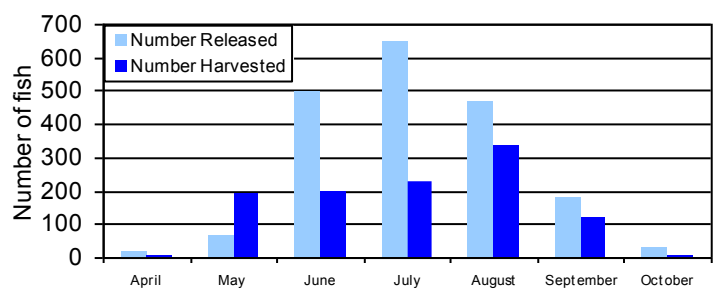
Channel catfish catch was slightly improved during 2018, with 1,900 catfish released and 1,080 harvested. Catfish caught during the survey ranged from 4 to 36 inches. The length of harvested catfish ranged from 11 to 35 inches and the average length was 20.5 inches. The month of July had the highest total catch, while harvest was highest during August. Anglers seeking catfish caught 0.17 fish/hour and harvested 0.09 fish/hour during the angler survey period. August had the highest monthly catch rate of 0.37 fish/hour.



**Channel Catfish Caught Per Year**



**Channel Catfish Caught Per Month**



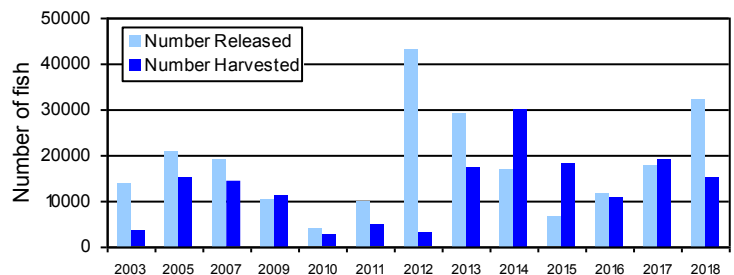
## Crappie

**2018 Regulations:** *10-inch minimum length limit, 15 panfish daily bag*

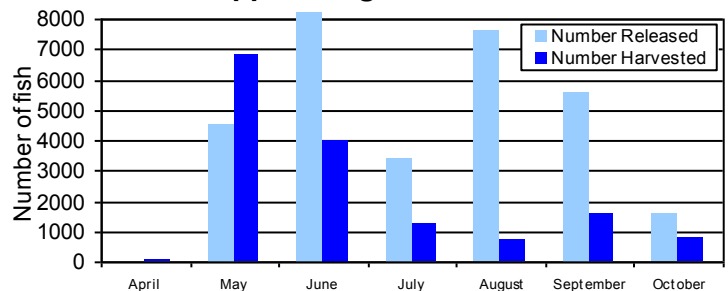
Crappie harvest was slightly lower, but the overall catch was the highest recorded in several years. There were 15,170 crappie harvested and 32,031 released. Harvested crappie ranged from 9 to 16 inches and had an average length of 11.0 inches. Compliance with the length limit remained very good, as only one percent of the harvest consisted of fish shorter than the minimum length limit. Crappie catch was consistently good from May through September, although most harvest occurred in May and June. Anglers seeking crappie caught 1.5 fish/hour and harvested 0.51 fish/hour. August had the highest catch rate, as anglers caught 4.0 fish/hour.



**Crappie Caught Per Year**



**Crappie Caught Per Month**



# Walleye

**2018 Regulations:** *Daily bag limit may include 2 walleye between 15 inches and not greater than 20 inches and 1 walleye longer than 28 inches. There is a slot limit protecting walleye 20 through 28 inches.*

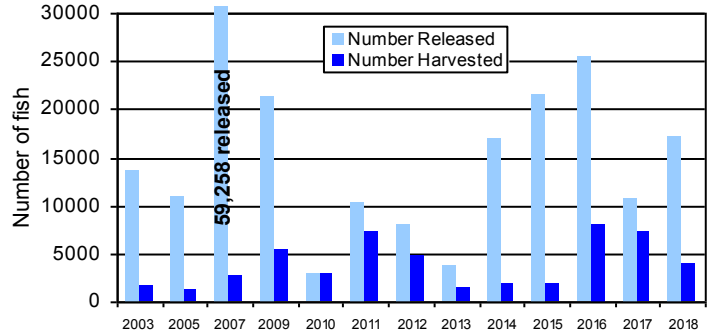
The overall catch of walleye improved in 2018, but the majority of the catch consisted of fish that were less than 15 inches. The number of harvested walleye dropped and was approximately half of what has been taken the past two seasons. Total catch was 21,068 walleye, with released fish totaling 17,218 and harvested fish totaling 3,850. Walleye caught by anglers during the survey ranged from 4 to 30 inches. When the angler catch is broken down by size groups: 65% of the catch was less than 15 inches; 28% was between 15 and 20 inches; and 7% was greater than 20 inches.

The majority of harvested walleye ranged from 15 to 18 inches and the average length was 16.7 inches. Compliance with the length regulation remains good, as 1.7% of the harvest was smaller than 15 inches and 1.2% was in the 20 to 28 inch protected slot. May and June were the best months for catching walleye at Sherman. Catch rates for anglers seeking walleye were 0.348 fish/hour and harvest rates were 0.068 fish/hour. June had the highest overall catch rate for anglers targeting walleye at 0.51 fish/hour.

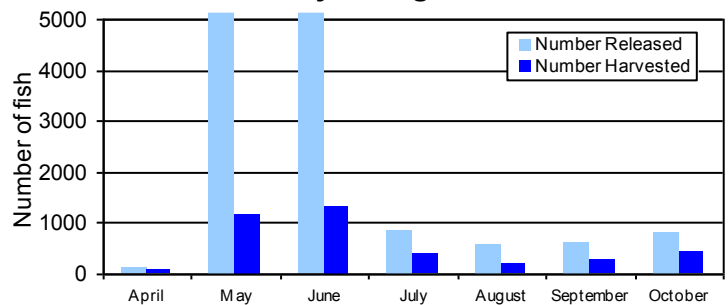
The restrictive length limits enacted in 2009 continue to create very good fishing opportunities at Sherman Reservoir. Although the regulation has reduced the daily bag limit to only two fish, the annual angler harvest of walleye has on average more than doubled. The average harvest prior to the 2009 regulation change was only 1,691 fish per year. The average harvest since 2009 has been 4,429 fish annually.

Future success of the walleye length limit continues to be dependent on successful walleye recruitment and compliance from the anglers pursuing walleye at Sherman.

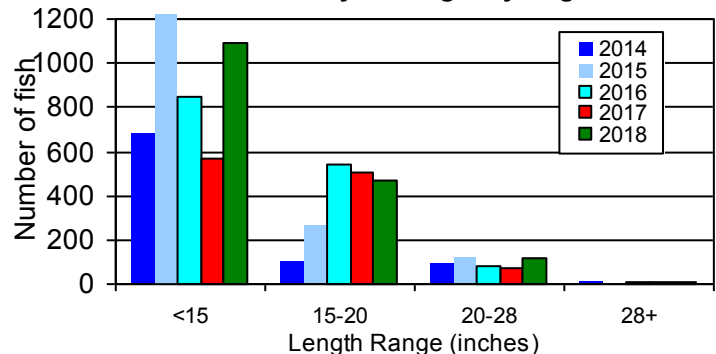
**Walleye Caught Per Year**



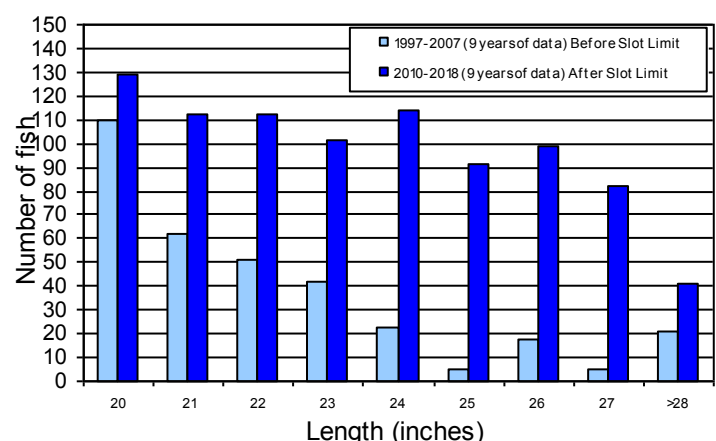
**Walleye Caught Per Month**



**Size of Walleyes Caught by Anglers**



**Number of 20 to 28 Inch Walleye Caught By Anglers**

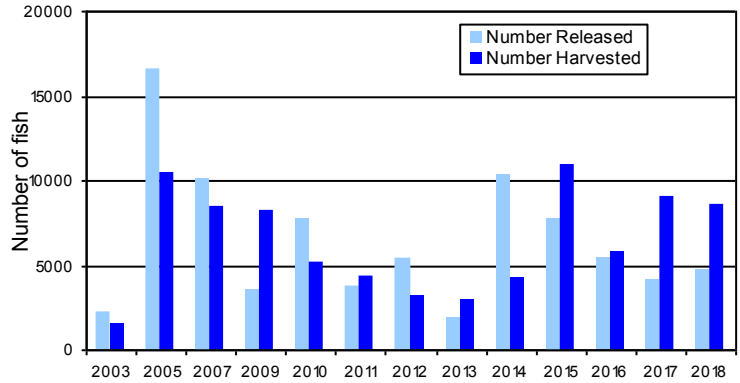


# White Bass

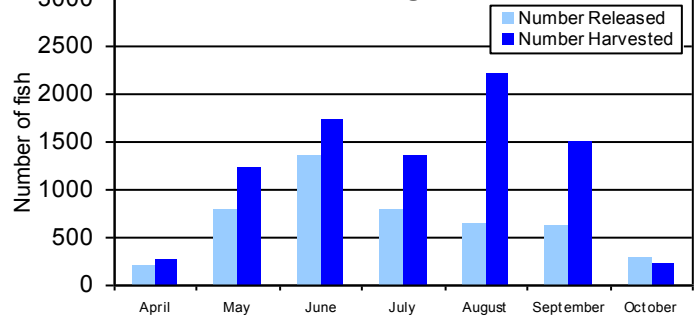
**2018 Regulations:** 15 fish daily bag, no more than one fish over 16 inches in daily bag

White bass catch and harvest has been consistently good the past four years. There were a total of 13,266 white bass caught and 8,532 harvested in 2018. Harvested fish ranged from 8 to 16 inches and the average length was 12.5 inches. June saw the highest total catch of white bass, but harvest was highest during the month of August. The catch rate for anglers seeking white bass was 0.90 fish/hour and the harvest rate was 0.71 fish/hour. The highest monthly catch rate was in April when anglers were catching 1.9 white bass per hour of angling effort.

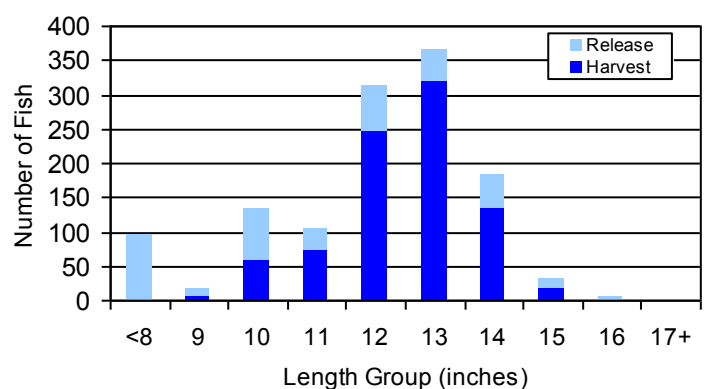
**White Bass Caught Per Year**



**White Bass Caught Per Month**



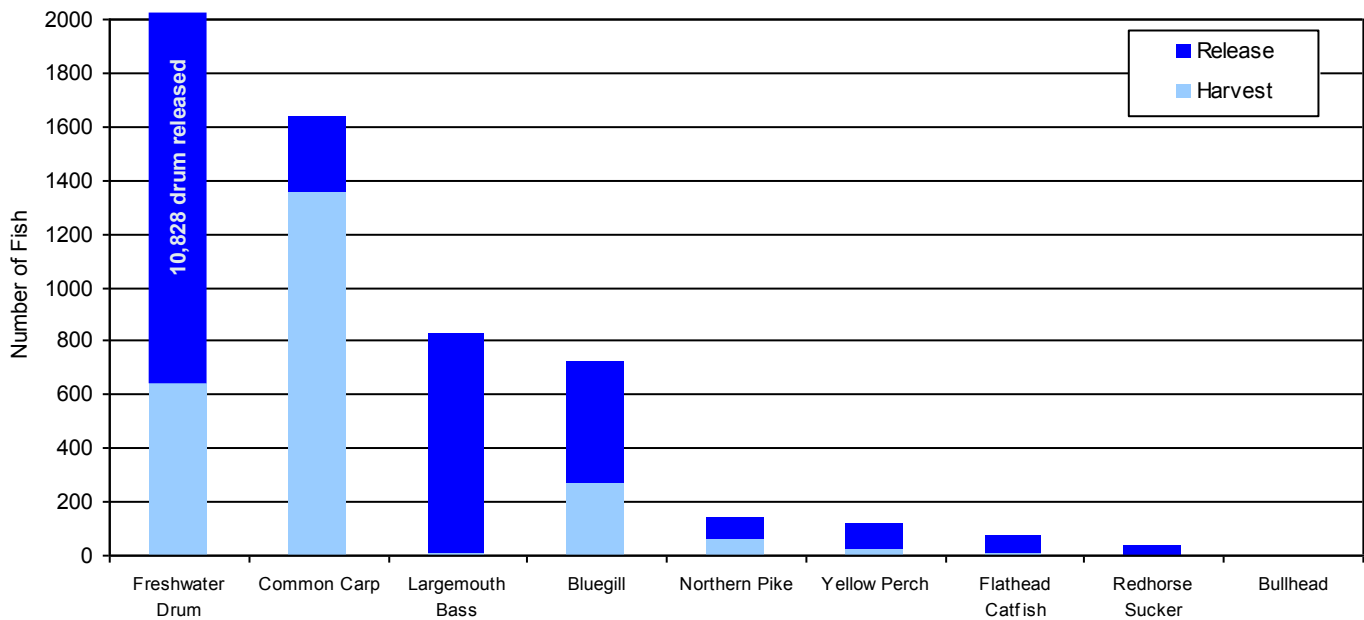
**Length of White Bass Caught by Anglers**



## Miscellaneous Species

There were nine other fish species represented in the 2018 angler catch. Freshwater drum were most commonly caught, followed by common carp, largemouth bass, bluegill, northern pike, yellow perch, flathead catfish, redhorse suckers, and black bullheads.

**2018 Sherman Reservoir Catch by Species**



For additional information about fisheries management at Sherman Reservoir, please contact the NGPC Kearney office at 308-865-5310 or by email at the addresses listed below.

District Manager: Brad Newcomb: [brad.newcomb@nebraska.gov](mailto:brad.newcomb@nebraska.gov)

Biologist: Brad Eifert: [brad.eifert@nebraska.gov](mailto:brad.eifert@nebraska.gov)