



ESCAPE OMAHA FISHING TRIP PLANNER

Featuring Eugene T. Mahoney State Park,
Platte River State Park, Louisville State Recreation Area
and Two Rivers State Recreation Area

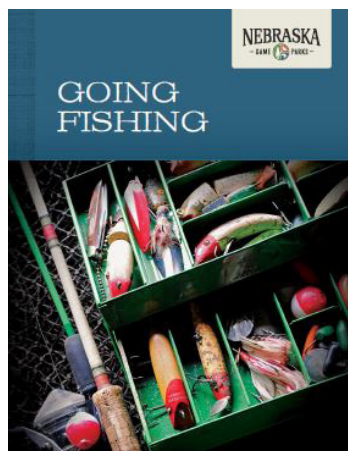
Fishing is a great family get-away activity and several metro state parks offer comfortable and fantastic fish catching opportunities 30 minutes from Omaha.

- High success rate of catching fish for the entire family.
- Fishing locations that offer beginner friendly amenities.
- Affordable fishing licenses with annual, 3-day, and 1-day fishing license options.
- Fish and enjoy other fun family activities.

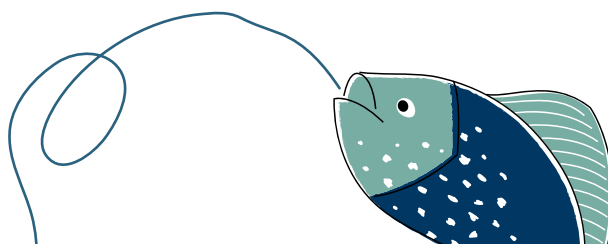
Getting Started!

Fishing can be easy and inexpensive. Start out simple with a simple push button spin-casting reel and basic tackle of hooks, weights, bobbers, hook remover and hand towel. Canned corn, lunch meat or hot dogs all work well for bait.

Fishing Resources



Fishing is fun. We encourage those new to fishing to use the Going Fishing publication as a resource to answer your questions. Additional suggested publications include the Common Fishes of Nebraska identification pamphlet and the annual Fishing Guide for current regulations and fishing locations suggestions. All found at OutdoorNebraska.org/FishingGuidesandReports



How to Buy a Fishing License and Park Permit:

Fishing licenses and park permits are available at Game and Parks Commission offices and permit vendors statewide or at OutdoorNebraska.org

Fishing Licenses:

Resident Annual: \$38, 3-Day: \$31 and 1-Day: \$10
Non-resident Annual: \$84, 3-Day: \$37 and 1-Day: \$14.50

Park Entry Permits:

Annual: \$30, Duplicate Annual: \$15 and 1-Day: \$6

Vehicles not registered in Nebraska:

Annual: \$60, Duplicate Annual: \$30 and 1-Day: \$12



Beginner Friendly Fishing near Omaha

Eugene T. Mahoney State Park (SP) CenturyLink 10-acre lake offers a great location to fish for bluegill, largemouth bass, channel catfish and rainbow trout. There are two fishing docks; the dock nearest the parking area is Americans with Disability Act (ADA) accessible and reached by a short paved path. Bass, bluegill and channel catfish are popular species during the summer. In mid-October, rainbow trout are stocked and become very popular throughout the fall, winter and spring. Fish from either dock or the shoreline using corn or dough bait with a bobber or with a weight on the bottom.

Louisville State Recreation Area (SRA) has five ponds that make up 40 acres. Lakes #1 and 1a are in the process of a fish renovation. Lakes #2, 2a and 3 are excellent for bass and bluegill along the shoreline and channel catfish out deeper. Lake #2 offers the most accommodations, with multiple fishing docks and groomed shorelines.

Platte River State Park (SP) beginner friendly Jenny Newman Lake is 4 acres and is catch and release for all fish species. Largemouth bass, bluegill, redear sunfish and channel catfish are the most popular catch. This beginner friendly lake has an ADA-accessible fishing shelter and a concrete paved trail around the lake for additional fishing access sites. Loaner fishing poles are available at the park's Owen Marina during business hours. Popular baits are worms and hotdogs. Hold on to your fishing pole as there are some large channel catfish in this lake!

Two Rivers State Recreation Area (SRA) offers seven sandpit lakes. Many species of fish are available, but the most popular include trout, bluegill, channel catfish, and largemouth and smallmouth bass. Loaner fishing poles are available at the park office during business hours.

Two Rivers' lakes #1 through #4 are all excellent for bluegill and bass of all sizes. Lake #5 is a dedicated trout fishing lake that requires a special daily tag purchased from the office at the park entrance. This lake is best for trout from April through early June and is wonderful for beginners who want to catch beautiful rainbow trout. Use small hooks with corn or a dough bait and fish on the bottom from any shoreline. The lake has an easily accessible ADA dock and highly maintained and groomed shorelines that are very family friendly.



Platte River SP Crawdad Creek



Louisville SRA Floating Playground



E. T. Mahoney State Park Venture Climb



Schramm Education Center

Other Fun Activities

When your arm gets tired of catching fish and baiting hooks, Venture Parks offer many fun activities for the entire family. Venture Parks includes Eugene T. Mahoney and Platte River state parks and Louisville SRA and Schramm SRA and Education Center all within a few miles of each other. These four park locations provide an array of family activities, such as

- Water activities: family aquatic center, spray park, floating playground and crawdad creek.
- Adventurous activities: Go Ape ropes course and zip lines, Venture Climb (a state of the art 42-foot climbing wall), miniature golf, hiking and biking trails.
- Educational activities: Schramm SRA's Education Center is a state-of-the-art facility with fun hands-on learning about Nebraska's aquatic and terrestrial ecosystem.

For a full list of Venture Park activities, visit:

OutdoorNebraska.org/VentureParks

Contact Us:

Nebraska Game and Parks
2200 North 33rd Street
Lincoln, NE 68503

Larry Pape – 402-471-5447
Larry.Pape@Nebraska.gov

