

2017 Omaha Area Fishing Forecast

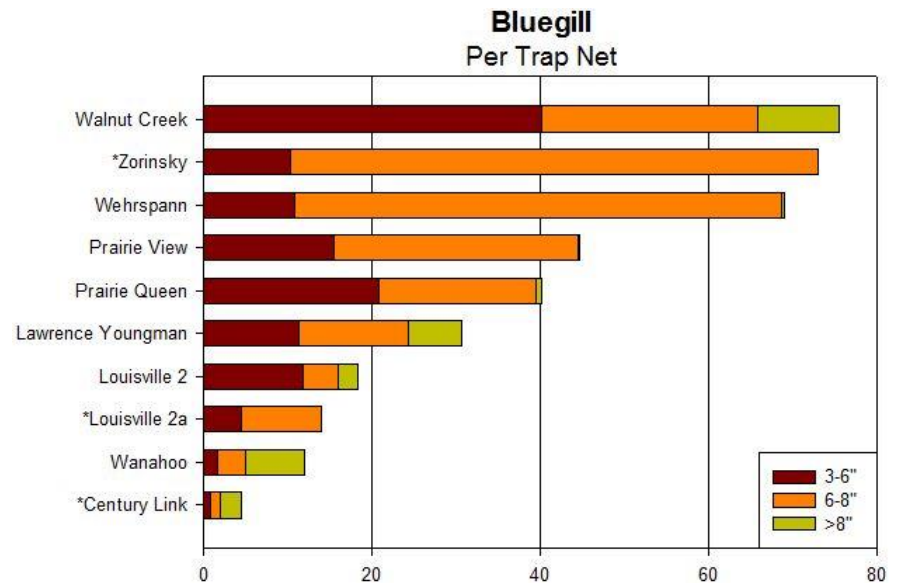


This is a fishing forecast for the Omaha area. The forecast includes figures for area public water bodies that were surveyed by the Nebraska Game and Parks Commission (NGPC) during *2015 and 2016. Therefore, there may be other water bodies in the area that provide good fishing opportunities that are not included in this forecast (see map). The following information will help anglers decide on where the best fishing for a variety of species can be found based on survey results. Anglers seeking more information on area lakes such as locations, lake maps, regulations and stocking reports are encouraged to browse the Nebraska Game and Parks website at www.outdoornebraska.gov.



Bluegills

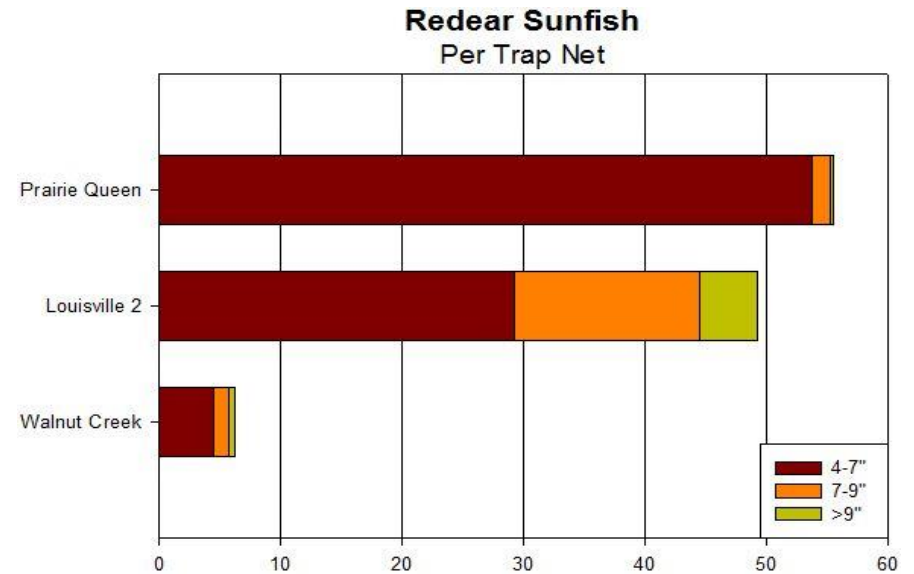
Anglers looking for bluegills in the Omaha metro will have a variety of lakes to choose from. **Walnut Creek** will be an excellent choice for bluegills with a good number of them being over 8 inches. **Zorinsky**, **Prairie View** and **Prairie Queen** will be good options to take a kid or beginners, while **Lawrence Youngman**, **Louisville 2** and **Wanahoo** will provide anglers a better chance at larger fish.



* 2015 Survey

Redear Sunfish

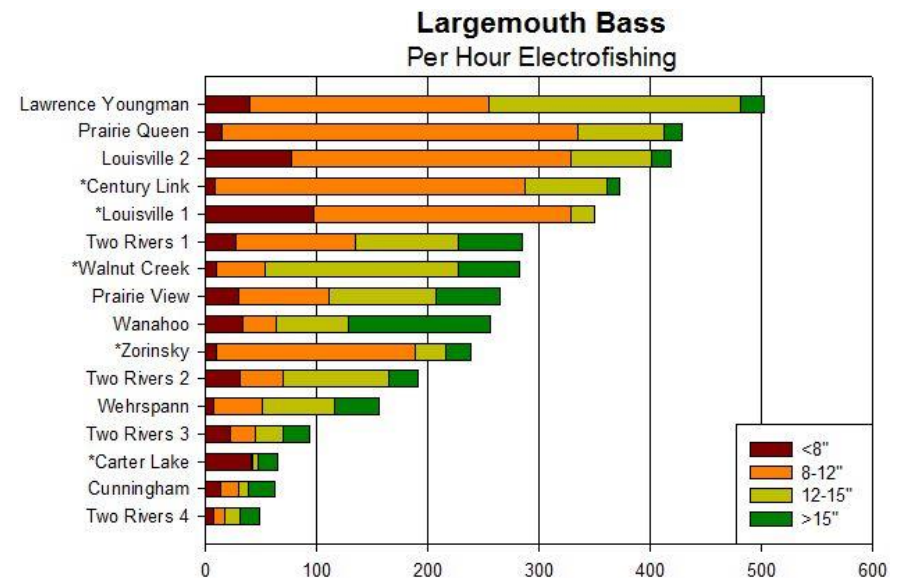
Redear sunfish were sampled in three lakes in the Omaha area last year. **Louisville 2** will be the place to head to for larger redears in 2017, in fact multiple fish over 10" were sampled in the spring of 2016. The redeer fishery at **Prairie Queen** continues to grow and anglers can expect good redeer fishing for years to come.



Largemouth Bass

Largemouth bass, like bluegills and other members of the sunfish family, prefer clean water and an abundance of cover which is what you will find at three lakes with the greatest bass densities.

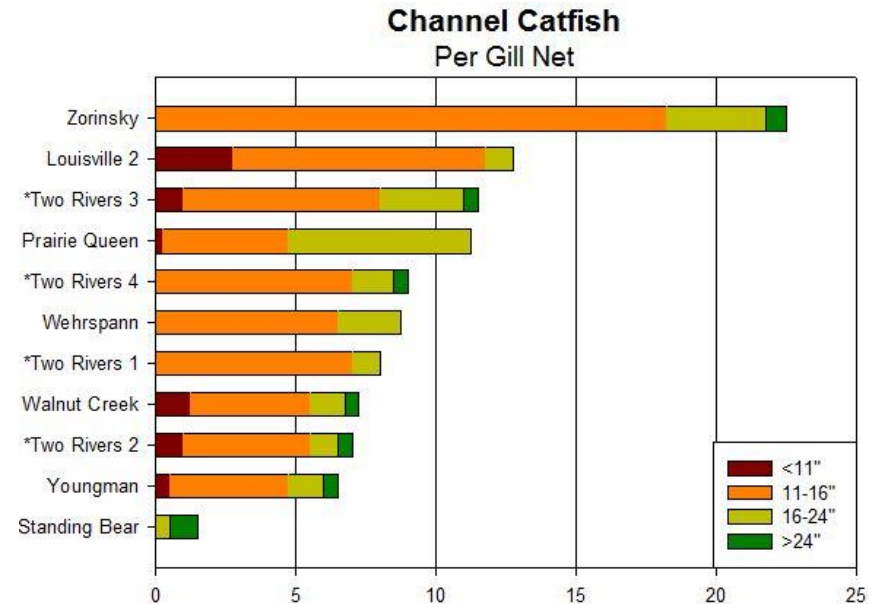
Lawrence Youngman, Prairie Queen and **Louisville 2** will provide excellent bass fishing in 2017. **Two Rivers 1 and 2, Lake Wanhoo, Prairie View** and **Wehrspann** will provide good opportunity for bass over 15 inches. Anglers looking for trophy bass should try **Cunningham** which had the most bass sampled over 18 inches in the Omaha metro.



* 2015 Survey

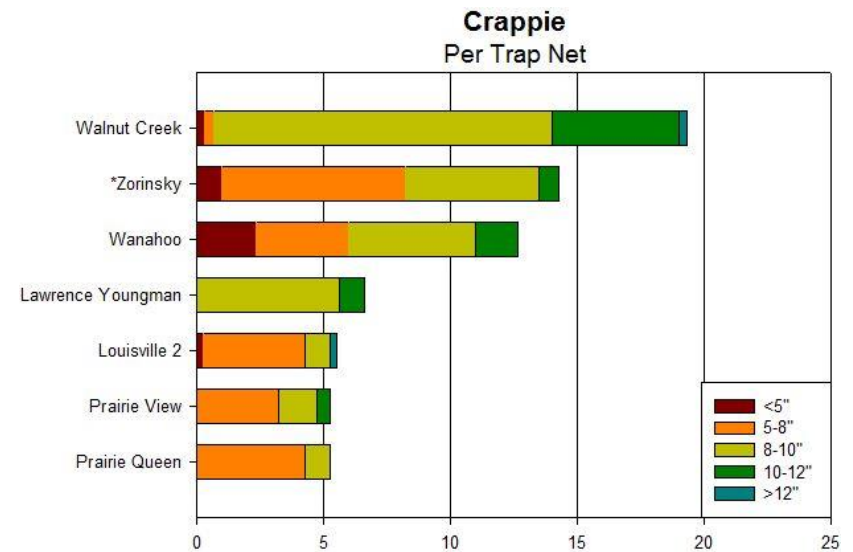
Channel Catfish

Channel catfish are popular throughout Nebraska and can be found in almost every reservoir and river in the metro area. **Zorinsky** will offer some of the best channel catfishing for both eater and trophy sized fish. Additionally, anglers fishing **Two Rivers SRA** have the potential to catch some large channel catfish. Anglers should note that all catfish are catch and release on **Two Rivers Lakes 3 and 4**. Anglers should not overlook the creek and river systems in the Omaha area as these can produce nice catfish throughout the year.



Crappie

Crappie fishing in the Omaha metro area should be good again in 2017. **Walnut Creek** will have good numbers of 8-12" fish as well as a few trophies. In fact, **Walnut Creek** yielded the largest individual crappie of all the southeast district lakes sampled during 2015 and 2016 with a length of 18" (pictured in above photo). **Zorinsky** and **Lawrence Youngman** will also provide good opportunity for 8-12" fish. **Lake Wanahoo** trap nets showed a dramatic drop in crappie from 2015; however, gill net data still showed a high crappie density in the lake.



Northern Pike

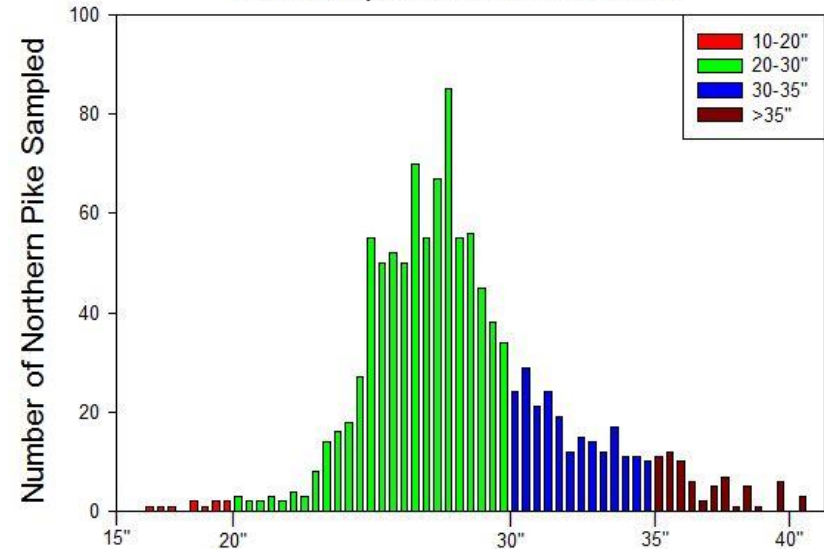
Lake Wanahoo will again provide a unique fishing opportunity to catch northern pike in eastern Nebraska. Larger fish are becoming more abundant and NGPC biologists sampled their first pike larger than 40" in the spring of 2016. The northern pike tagging study will continue in 2017 and anglers are asked to report all tagged fish to NGPC.FISHTAGS@NEBRASKA.GOV. **Cunningham** will also provide a chance at catching northern pike; however, the chances of catching more and larger fish are much better at **Lake Wanahoo**. Anglers are required to release all northern pike caught at both **Cunningham** and **Lake Wanahoo**.

Other Species

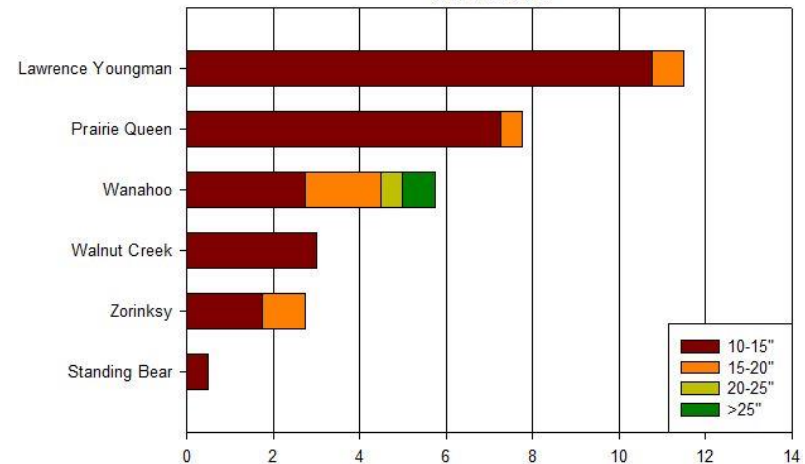
Walleye

Since switching to the 8" advanced fingerling stockings we have seen an increase in walleye at a number of metro lakes. Most of these advanced-stocked walleyes grow rapidly and will reach harvestable size (15" minimum length limit) within 2 years of stocking. Netting results indicate the walleye fisheries at **Lawrence Youngman** and **Prairie Queen** are off to fantastic starts. **Lake Wanahoo** and **Zorinsky** will have the best opportunity for harvestable walleyes. **Cunningham**, although not sampled this year, may yield a few larger walleyes. Advanced saugeyes were also stocked in **Cunningham** the last two years.

Northern Pike
Total Sampled at Lake Wanahoo



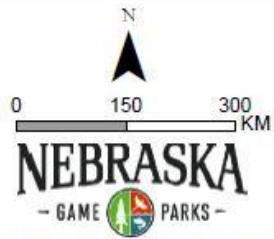
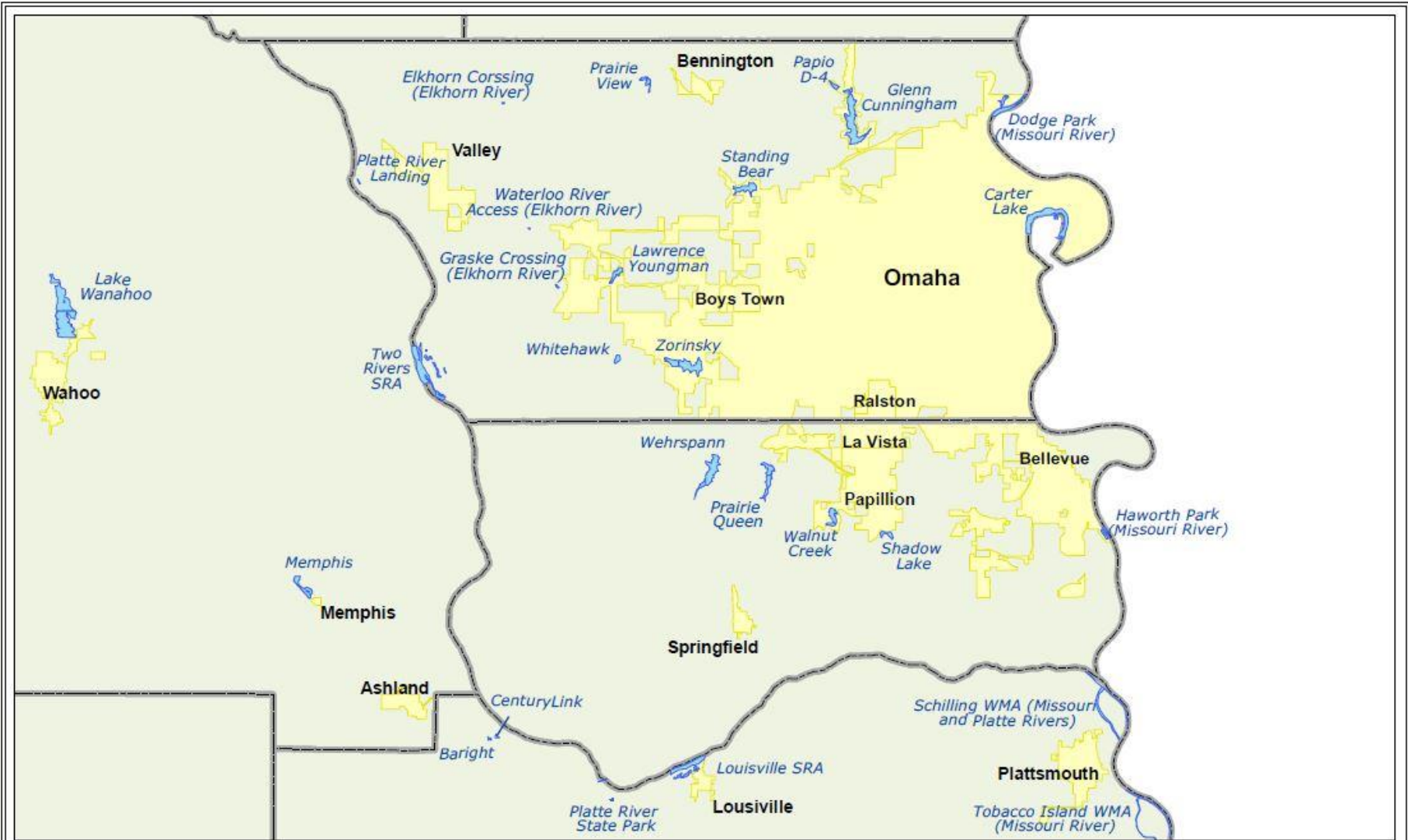
Walleye
Per Gill Net



Rainbow Trout

Although the Omaha metro doesn't have cold-water streams that support trout, there is still plenty of opportunity in and around Omaha to catch them. Rainbow trout are routinely stocked in the spring at **Two Rivers 5** while **Standing Bear, Benson Lake, Hitchcock Lake, Towl Lake** receive fall stockings and **Lake Halleck** and **CenturyLink Lake (in Mahoney SP)** receive spring and fall stockings. Anglers can check the stocking database on the Game and Parks website to see the exact date rainbow trout were stocked.





Trisha Schlake, IT Division, 1/6/2016

