

Assassin Bug

Sinea diadema

Size: L: 0.47 - 0.63 in.

Description: Dark brown or a dull red with narrow head with straw-like beak, flat, expanded abdomen, narrow wings and spines on front legs.

Diet: Insects

Habitat: Crop fields and gardens

Viewing: Summer, statewide



Yellow Garden Spider

Argiope aurantia

Size: L: 0.20 - 1.1 in.

Description: Yellow and black orb weaver with long yellow-red and black legs. Female: larger and brighter. Male: more brown.

Diet: Insects

Habitat: Rural to urban

Viewing: Spring-fall, more common in eastern half



Marbled Orbweaver

Araneus marmoreus

Size: L: 0.20 - 0.71 in.

Description: Orange to brown, lighter oval abdomen with darker markings resembling veined marble.

Diet: Insects

Habitat: Rural to urban

Viewing: Spring-fall, more common in eastern half



Spined Micrathena

Micrathena gracilis

Size: L: 0.18 - 0.39 in.

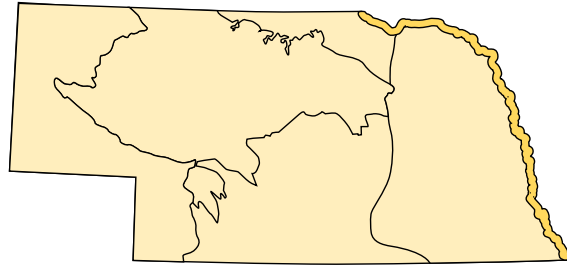
Description: Females: Black and white with spines on abdomen. Males: Brown with flat abdomen.

Diet: Insects

Habitat: Woodlands

Viewing: Summer, more common in eastern half

Missouri River Corridor



The Missouri River corridor includes the river channel, the associated floodplain, wetlands, and bluffs. This region consists of a mixture of riparian and upland deciduous forests, and tall- and mixedgrass prairies. The Missouri River runs approximately 2,320 miles from the headwaters in Montana to where it converges with the Mississippi River in St. Louis, Missouri. A 400-mile stretch of the Missouri River borders eastern Nebraska, running from the South Dakota border to the Kansas border, separating the state of Nebraska from Iowa.

The Missouri River has undergone many changes throughout the 20th century. Where the river once freely meandered across a vast floodplain, channelization, dams, conversion of wetlands, and development of structures and agriculture fields have transformed this region. Even so, the Missouri River corridor provides habitat not readily found throughout the rest of the state and allows for the success of some species in Nebraska whose geographic ranges are limited to this region.



Insect Viewing Tips

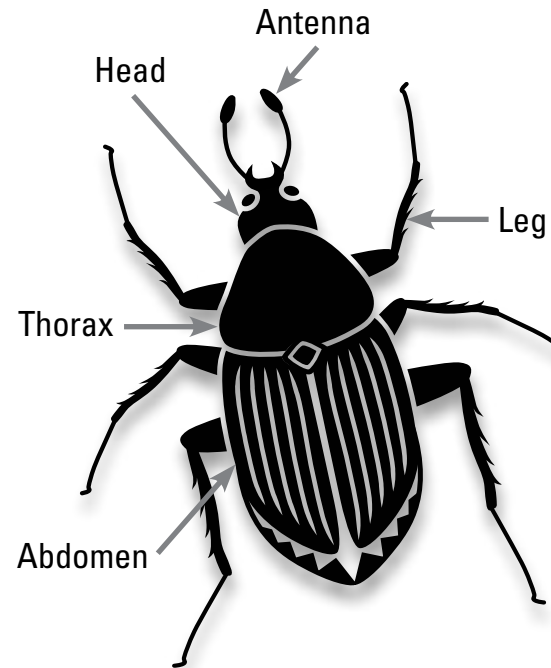
1. **Go to where the habitat is** — visit state parks and other public spaces.
2. **Do your homework** — learn what species live in the area.
3. **Think about timing** — check what is active in the area this time of year.
4. **Consult an expert** — join in on a guided insect hike to learn more.
5. **Leave no trace** — leave wildlife in nature and nature the way you found it.



Common Green Darner, female

Insects of the Missouri River Corridor

Basic Insect Anatomy



Identification Guide



Monarch

Danaus plexippus

Size: WS: 3.3 - 4.8 in.

Description: Orange butterfly with black body, veins and borders with white spots, Male: has black spot at center of each lower wing.

Diet: Milkweed (larva), nectar (adult)

Habitat: Open fields, rural to urban

Viewing: Spring-fall, statewide



Salt Marsh Moth

Estigmene acrea

Size: WS: 1.8 - 2.6 in.

Description: Overall large white moths with black spots. Males: pale yellow-tan hind wings. Abdomen is orange-yellow with black spots.

Diet: Leafy plants (larva)

Habitat: Woodlands, marshes and fields

Viewing: Summer, statewide



Familiar Bluet

Enallagma civile

Size: L: 1.3 - 1.7 in.

Description: Bright blue damselfly with slender abdomen.

Diet: Insects

Habitat: Near still or slow moving water

Viewing: Summer-fall, statewide



Red Milkweed Beetle

Tetraopes tetrophthalmus

Size: L: 0.20 - 0.23 in.

Description: Elongated red beetle sometimes with irregular black spots and long antenna.

Diet: Milkweed

Habitat: Variable, where milkweed is present

Viewing: Summer, statewide



Regal Fritillary

Speyeria idalia

Size: WS: 2.6 - 4.0 in.

Description: Upper forewing red-orange with black, hind wing black with row of white spots. Males have row of orange spots.

Diet: Violets (larva), nectar (adult)

Habitat: Open fields with violets

Viewing: Summer, statewide, more common east



Common Green Darner

Anax junius

Size: WS: 2.7 - 3.1 in.

Description: Green dragonfly Males: blue abdomen with black stripe along the top. Black spot on the forehead enclosed by a blue semicircle. Female: abdomen ranges from reddish-brown to gray.

Diet: Insects

Habitat: Near still or slow moving water

Viewing: Summer, statewide



*Brown-belted Bumblebee

Bombus griseocollis

Size: L: 0.37 - 0.75 in.

Description: Bumblebee with black head and wings and brown belt band on thorax.

Diet: Nectar and pollen

Habitat: Rural to urban

Viewing: Spring-summer, statewide



Carolina Mantis

Stagmomantis carolina

Size: L: 1.89 - 2.24 in.

Description: Pale green to brown-gray thick, bent front legs, oversized eyes atop a triangular head.

Diet: Insects

Habitat: Rural to urban

Viewing: Summer-fall, eastern half



Red Admiral

Vanessa atalanta

Size: WS: 1.75 - 3.0 in.

Description: Black with white spots near wing tips, forewing with red band, hindwing with red edge.

Diet: Prefer sap flow or fermenting fruit, also nectar (adult)

Habitat: Moist woods, marshes and backyards

Viewing: Spring-summer, statewide



Cobra Clubtail

Gomphus vastus

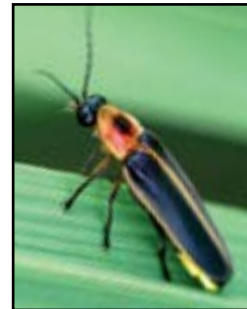
Size: WS: 1.9 - 2.2 in.

Description: Black with yellow to green markings and a very wide club (end). Green eyes and yellow face with a broad blackish stripe.

Diet: Insects

Habitat: Near large rivers with moderate to strong current

Viewing: Summer, Missouri River corridor



Common Eastern Firefly

Photinus pyralis

Size: L: 0.39 - 0.55 in.

Description: Black-brown, segments outlined in yellow. Red plate behind head with two black spots. Last segment of body lights up.

Diet: Insects

Habitat: Rural to urban

Viewing: Summer, east



Two-Striped Grasshopper

Melanoplus bivittatus

Size: L: 1.2 - 2.2 in.

Description: Smooth yellow-brown with two distinct pale-yellow stripes.

Diet: Plants

Habitat: Rural to urban

Viewing: Summer, statewide



Zebra Swallowtail

Eurytides Marcellus

Size: WS: 2.5 - 4.0 in.

Description: Wings pale white-green with black stripes and long "tails" on hind wings.

Diet: Pawpaw leaves (larva), nectar (adult)

Habitat: Moist low woodlands near swamps/rivers, also fields

Viewing: Spring-summer, SE Missouri River corridor



Ebony Jewelwing

Calopteryx maculata

Size: L: 1.5 - 2.2 in.

Description: Dark metallic dark green body with smoky to black wings.

Diet: Insects

Habitat: Near still or slow moving water

Viewing: Spring-fall, statewide



Spotted Lady Beetle

Coleomegilla maculata

Size: L: 0.2 - 0.23 in.

Description: Oval-shaped, red to pink beetle with irregular black spots.

Diet: Aphids, mites and pollen

Habitat: Crop fields and gardens

Viewing: Summer, east



Differential Grasshopper

Melanoplus differentialis

Size: L: 1.2 - 2.2 in.

Description: Yellow-brown with dark V markings on outer hind legs.

Diet: Plants

Habitat: Rural to urban

Viewing: Summer, statewide