



Differential Grasshopper

Melanoplus differentialis

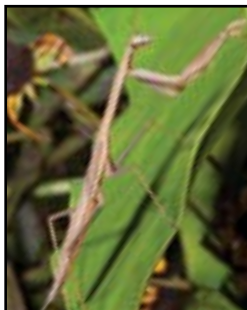
Size: L: 1.2 - 2.2 in.

Description: Yellow-brown with dark V markings on outer hind legs.

Diet: Plants

Habitat: Rural to urban

Viewing: Summer, statewide



Carolina Mantis

Stagmomantis carolina

Size: L: 1.89 - 2.24 in

Description: Pale green to brown-gray thick, bent front legs, oversized eyes atop a triangular head.

Diet: Insects

Habitat: Rural to urban

Viewing: Summer-fall, eastern half



Yellow Garden Spider

Argiope aurantia

Size: L: 0.20 - 1.1 in.

Description: Yellow and black orb weaver with long yellow-red and black legs. Female: larger and brighter. Male: more brown.

Diet: Insects

Habitat: Rural to urban

Viewing: Spring-fall, more common in eastern half



Marbled Orbweaver

Araneus marmoreus

Size: L: 0.20 - 0.71 in.

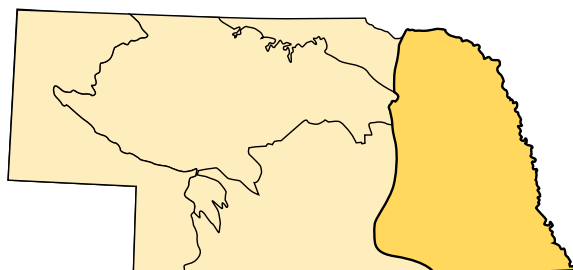
Description: Orange to brown, lighter oval abdomen with darker markings resembling veined marble.

Diet: Insects

Habitat: Rural to urban

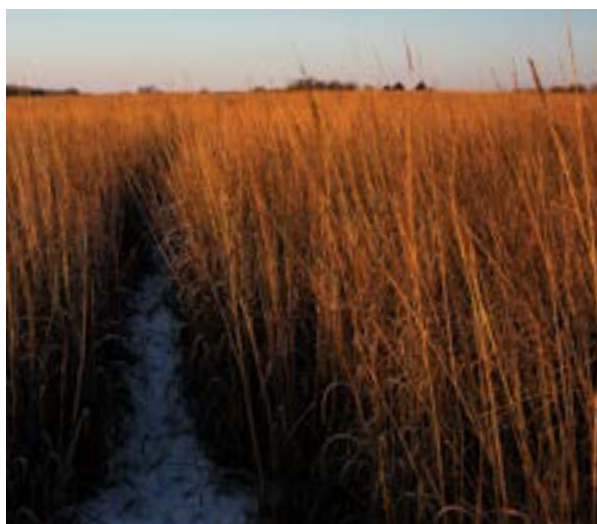
Viewing: Spring-fall, more common in eastern half

Tallgrass Prairie Region



The Nebraska tallgrass prairie region comprises the eastern quarter of the state. The key to this landscape is the thick, rich soil that enables deep-rooting prairie plants to survive. Grasses and forbs dominate this grassland region, with few trees, except along water corridors.

This area receives 25 - 36 inches of rain annually. Much of the historic grasslands have been converted, leaving only about 2 percent of unmodified tallgrass prairie habitat. This area incorporates many wetlands, including the saline wetlands, north of Lincoln. This range has a diversity of birds, plants, mammals, reptiles and insects that call it home.



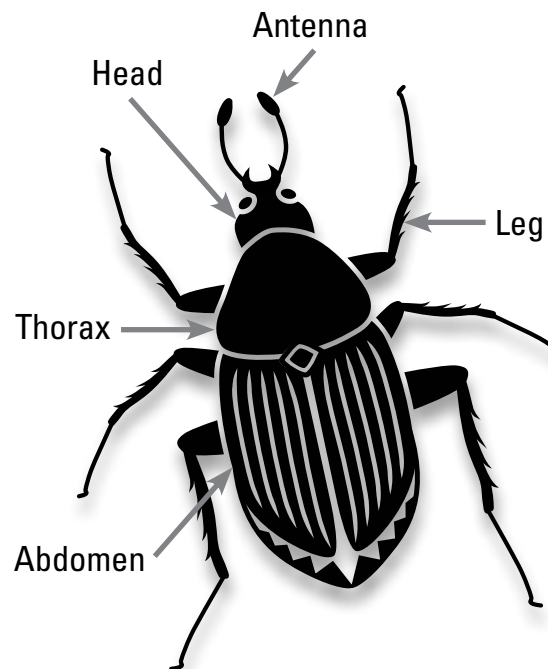
Insect Viewing Tips

1. **Go to where the habitat is** — visit state parks and other public spaces.
2. **Do your homework** — learn what species live in the area.
3. **Think about timing** — check what is active in the area this time of year.
4. **Consult an expert** — join in on a guided insect hike to learn more.
5. **Leave no trace** — leave wildlife in nature and nature the way you found it.



Insects of the Nebraska Tallgrass Prairie

Basic Insect Anatomy



Identification Guide



Monarch

Danaus plexippus

Size: WS: 3.3 - 4.8 in.

Description: Orange butterfly with black body, veins and borders with white spots, Male: has black spot at center of each lower wing.

Diet: Milkweed (larva), nectar (adult)

Habitat: Open fields, rural to urban

Viewing: Spring-fall, statewide



Painted Lady

Vanessa cadui

Size: WS: 2.0 - 2.87 in.

Description: Upperside orange-brown, upper forewing black with white, hind wing with row of black spots. Underside patterned brown-gray.

Diet: Nectar

Habitat: Rural to urban

Viewing: Summer, statewide



Dogbane Leaf Beetle

Chrysochus auratus

Size: L: 0.31 - 0.43 in.

Description: Small, oblong beetle with metallic green to brown coloration.

Diet: Dogbane and milkweed plants

Habitat: Dogbane and milkweed

Viewing: Summer, statewide



Halloween Pennant

Celithemis eponina

Size: L: 1.4 - 1.7 in.

Description: Dragonfly with orange wings with brown bands and red spots on front edge of wing.

Diet: Insects

Habitat: Marshes, ponds, lakes

Viewing: Summer, statewide



Regal Fritillary

Speyeria idalia

Size: WS: 2.6 - 4.0 in.

Description: Upper forewing red-orange with black, hind wing black with row of white spots. Males have row of orange spots.

Diet: Violets (larva), nectar (adult)

Habitat: Open fields with violets

Viewing: Summer, statewide, more common east



©Ken Childs, www.discoverlife.org

Isabella Tiger Moth

Pyrrharctia isabella

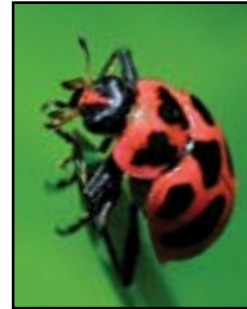
Size: WS: 1.75 - 2.25 in.

Description: Forewings orange-yellow-tan with broken black spot, Female: has orange-pink hind wing.

Diet: Herbaceous plants (larva)

Habitat: Rural to urban

Viewing: Spring-fall, statewide



Spotted Lady Beetle

Coleomegilla maculata

Size: L: 0.2 - 0.23 in.

Description: Oval-shaped, red to pink beetle with irregular black spots.

Diet: Aphids, mites and pollen

Habitat: Crop fields and gardens

Viewing: Summer, east



*Brown-belted Bumblebee

Bombus griseocollis

Size: L: 0.37 - 0.75 in.

Description: Bumblebee with black head and wings and brown belt band on thorax.

Diet: Nectar and pollen

Habitat: Rural to urban

Viewing: Spring-summer, statewide



Eastern Tiger Swallowtail

Papilio glaucus

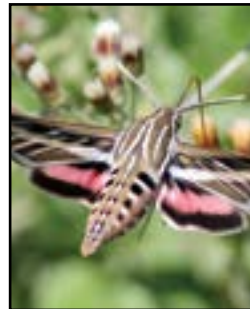
Size: WS: 2.5 - 4.5 in.

Description: Yellow with black tiger-stripes. Females have blue spots and a dark morph.

Diet: Nectar

Habitat: Rural to urban

Viewing: Spring-summer, statewide



White-lined Sphinx Moth

Hyles lineta

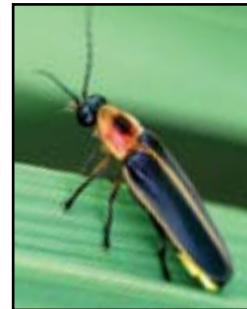
Size: WS: 2.4 - 3.6 in.

Description: Striped olive-brown with horizontal light tan stripe on forewing, and thicker horizontal pink stripe on hind wing.

Diet: Nectar

Habitat: Rural to urban

Viewing: Spring-summer, statewide



Common Eastern Firefly

Photinus pyralis

Size: L: 0.39 - 0.55 in.

Description: Black-brown, segments outlined in yellow. Red plate behind head with two black spots. Last segment of body lights up.

Diet: Insects

Habitat: Rural to urban

Viewing: Summer, east



*Common Eastern Bumblebee

Bombus impatiens

Size: L: 0.35 - 0.82 in.

Description: Shaggy bee with black head and body, light yellow on thorax.

Diet: Nectar and pollen

Habitat: Rural to urban

Viewing: Spring-summer, east



Clouded Sulphur

Colias philodice

Size: WS: 1.5 - 2.75 in.

Description: Male: Yellow-green with dark edging on wings, white eyespot on underwing, Female: yellow-white, less bold edging.

Diet: Nectar

Habitat: Open fields

Viewing: Summer, statewide



Goldenrod Soldier Beetle

Chauliognathus pensylvanicus

Size: L: 0.35 - 0.47 in.

Description: Golden-orange with variable black markings and black head and legs.

Diet: Insects (larva), pollen and nectar (adult)

Habitat: Rural to urban

Viewing: Summer, statewide



Familiar Bluet

Enallagma civile

Size: L: 1.3 - 1.7 in.

Description: Bright blue damselfly with slender abdomen.

Diet: Insects

Habitat: Near still or slow moving water

Viewing: Summer-fall, statewide



Two-striped Grasshopper

Melanoplus bivittatus

Size: L: 1.2 - 2.2 in.

Description: Smooth yellow-brown with two distinct pale-yellow stripes.

Diet: Plants

Habitat: Rural to urban

Viewing: Summer, statewide