

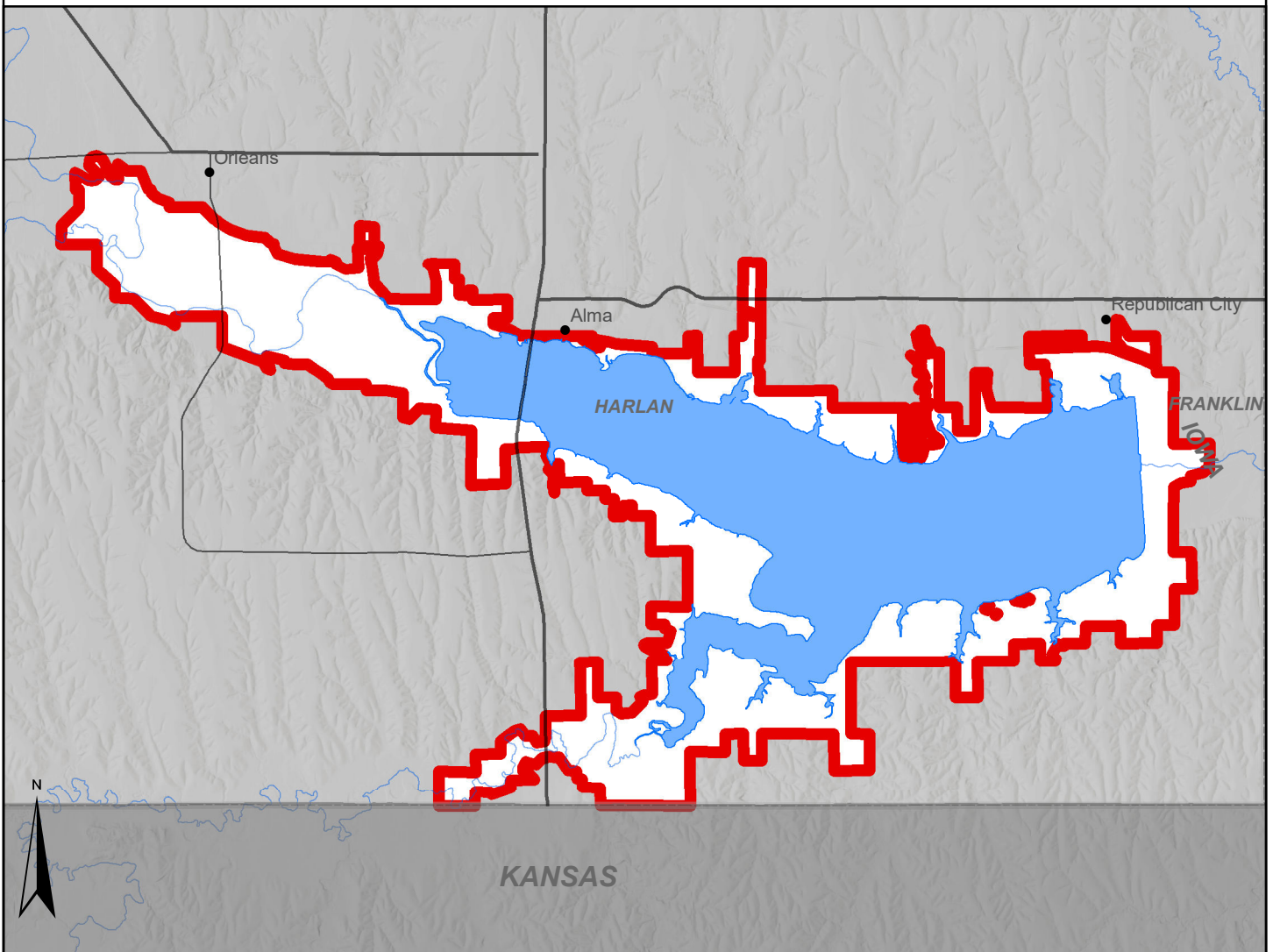
# 2023 Harlan County Reservoir AOSC NEBRASKA

## Deer Management Unit Map and Special Regulations



### Bag Limit Exceptions:

- Harvest of antlerless mule deer is prohibited on lands open to public hunting; lands enrolled in the Open Fields and Waters program are exempt from this restriction.
- See Deer Regulations and the Big Game Guide for additional deer hunting regulations.



### Area open:

AO SCA Harlan County Reservoir; the entire area open to hunting within the USACE Harlan County Lake Recreation Area.